

## STANDARD FEATURES FOR SPRINGS CONDOMINIUM HOMES

### ENERGY SAVING FEATURES

- Meets International Energy Code
- Carrier® 14 SEER heat pump with extended warrant (five/ten years)
- Automatic fresh air ventilation system
- Programmable thermostat
- Milgard Style Line™ vinyl windows, dual pane with low-E Suncoat Max glass
- R-30 attic insulation; R-18 outside wall insulation
- Radiant barrier on underside of attic plywood
- Fiberglass batt insulation in all party walls next to living areas
- Sound insulation between bathroom and living areas
- Caulking around all exterior openings
- LED bulbs in all light fixtures
- Enclosed roof overhang

### KITCHEN FEATURES

- Whirlpool® appliances include:
  - Electric range with ceramic glass smooth top and self-cleaning oven
  - Dishwasher
  - Microwave with built in vent system
- Kohler® sink
- Moen® faucets
- Garbage disposal
- Granite countertops
- Oak wood cabinets
- Lazy Susans and pullout shelves
- Waterline for ice maker
- Room pantry (1400 model)

### BATHROOM FEATURES

- Easy-care cultured marble vanities
- Double sinks in master bath (1400 model)
- Kohler® elongated toilets
- Medicine cabinets
- Towel bars and rings
- Non-slip surface and grab bars in tubs and showers

### FLOORING FEATURES

- Ceramic tile flooring in entry, kitchen, bath, laundry (per plan)
- Durable 100% nylon carpet selection

### LUXURY FEATURES

- Tile roof
- Fully landscaped front and rear
- Stucco and stone front elevations
- 9' high ceilings
- Choice of Classique or Colonial six-panel interior doors
- Rounded drywall corners
- Durable low-sheen enamel paint finish on all interior walls
- Closets for linen, coats and storage (per plan)
- Spacious master bedroom and great room
- Large walk-in closet in master bedroom with shoe rack and double shelves

### GARAGE FEATURES

- Finished 2-car garage
- Steel overhead garage door with windows
- Garage door opener with security deadbolt locks

### SAFETY AND SECURITY FEATURES

- Viewfinder in front door
- Advance warning smoke alarms
- Fiberglass doors with security deadbolt locks
- Night time roving patrol car

### ADDITIONAL FEATURES

- On-site professional Design Center; many upgrades and options to choose from
- 50-gallon hot water heater with 6-year tank warranty
- PEX plumbing system
- Cabinets over washer & dryer (1400 model)
- Two outside faucets for hose hookup
- State-of-the-art structured wiring system
- Wiring to National Electric Code; all copper wiring
- Ceiling fans in great room and master bedroom
- Light in attic
- Lighted covered patio
- Five-year termite warranty
- Basic cable television service from COX
- Courtyard wall is optional

ACTIVE ADULT LIVING AT ITS BEST

# SPRINGS CONDOMINIUM HOMES



FARNSWORTH'S  
SUNLAND SPRINGS  
VILLAGE

[sunlandsprings.com](http://sunlandsprings.com)



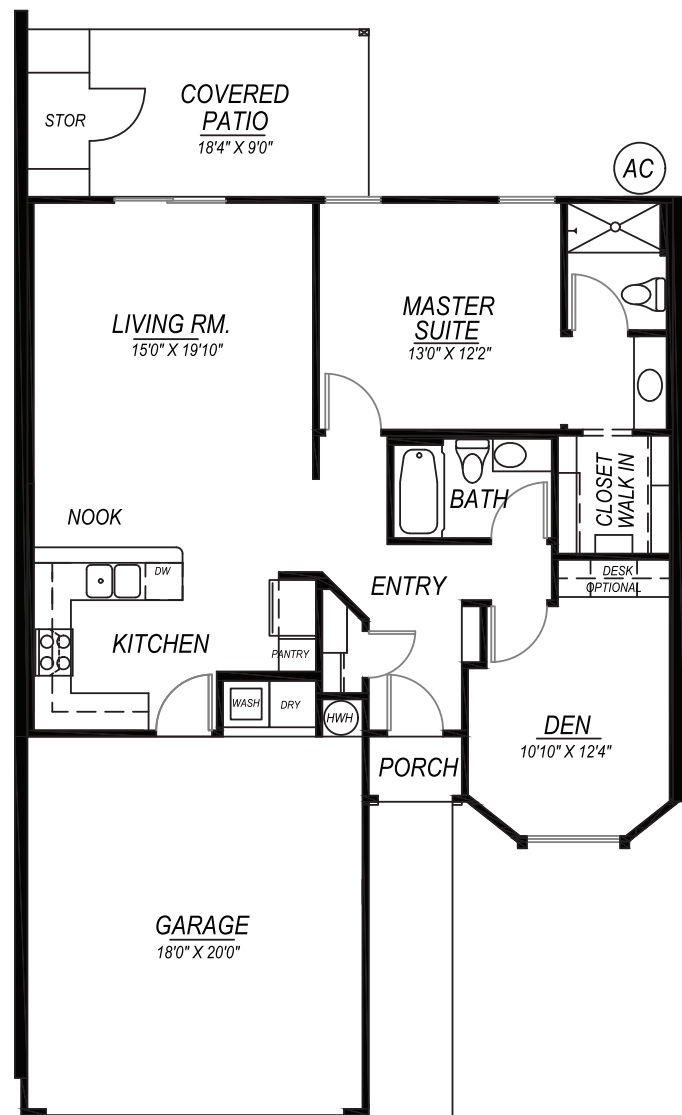
2233 South Springwood Boulevard  
Mesa, Arizona, 85209-1689  
480.984.4999  
[www.sunlandsprings.com](http://www.sunlandsprings.com)

# Model 1100

ACTIVE ADULT LIVING AT ITS BEST

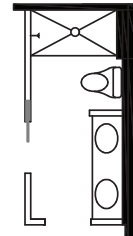
## Standard

Livable Area: 1,064 sq. ft.

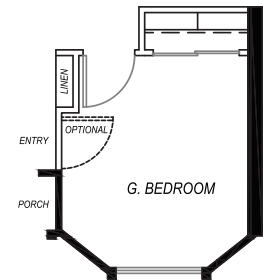


## Options

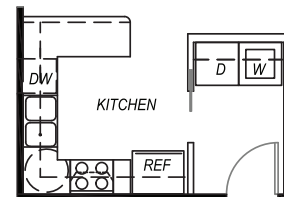
### M/Bathroom Option



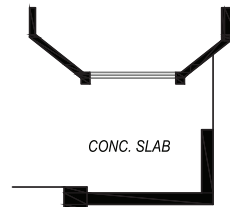
### Den Option



### Kitchen/Laundry Room Option



### Courtyard Wall & Slab Option



### Patio Slab Option

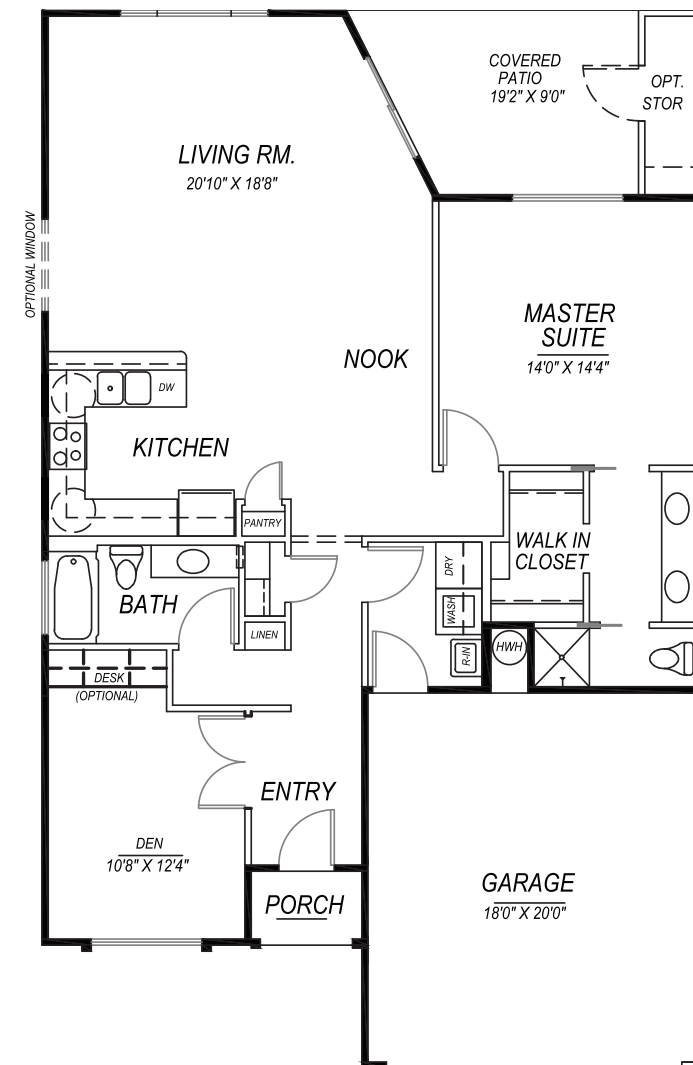


# Model 1400

ACTIVE ADULT LIVING AT ITS BEST

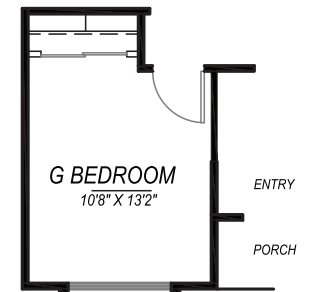
## Standard

Livable Area: 1,371 sq. ft.

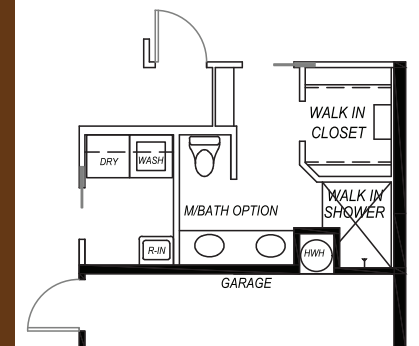


## Options

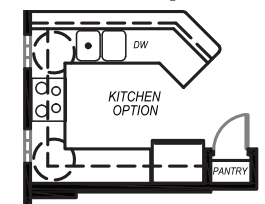
### Guest Bathroom Option



### Master Bath Option



### Kitchen Option



### Courtyard Wall & Slab Option

